

LAURA ROCHA

ARQUITETURA E INTERIORES



# MIRANTE GÁLIA

SÃO PAULO | MORUMBI





LAURARROCHA  
ARQUITETURA & INTERIORES

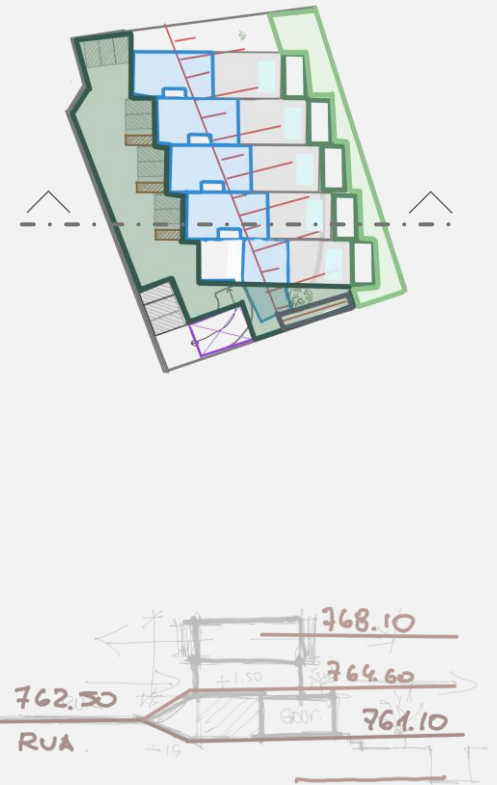
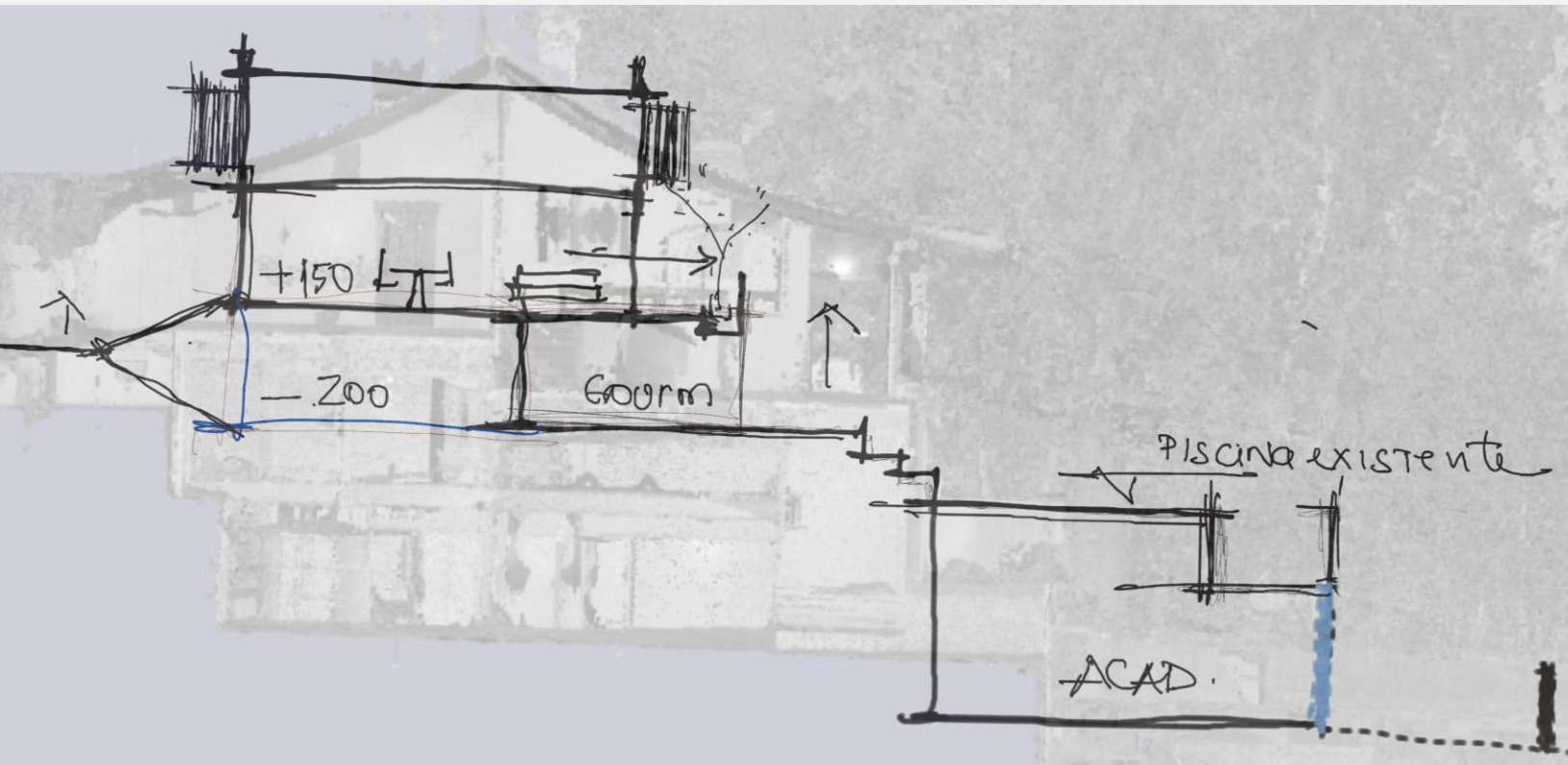


empreendimentos  
imobiliários

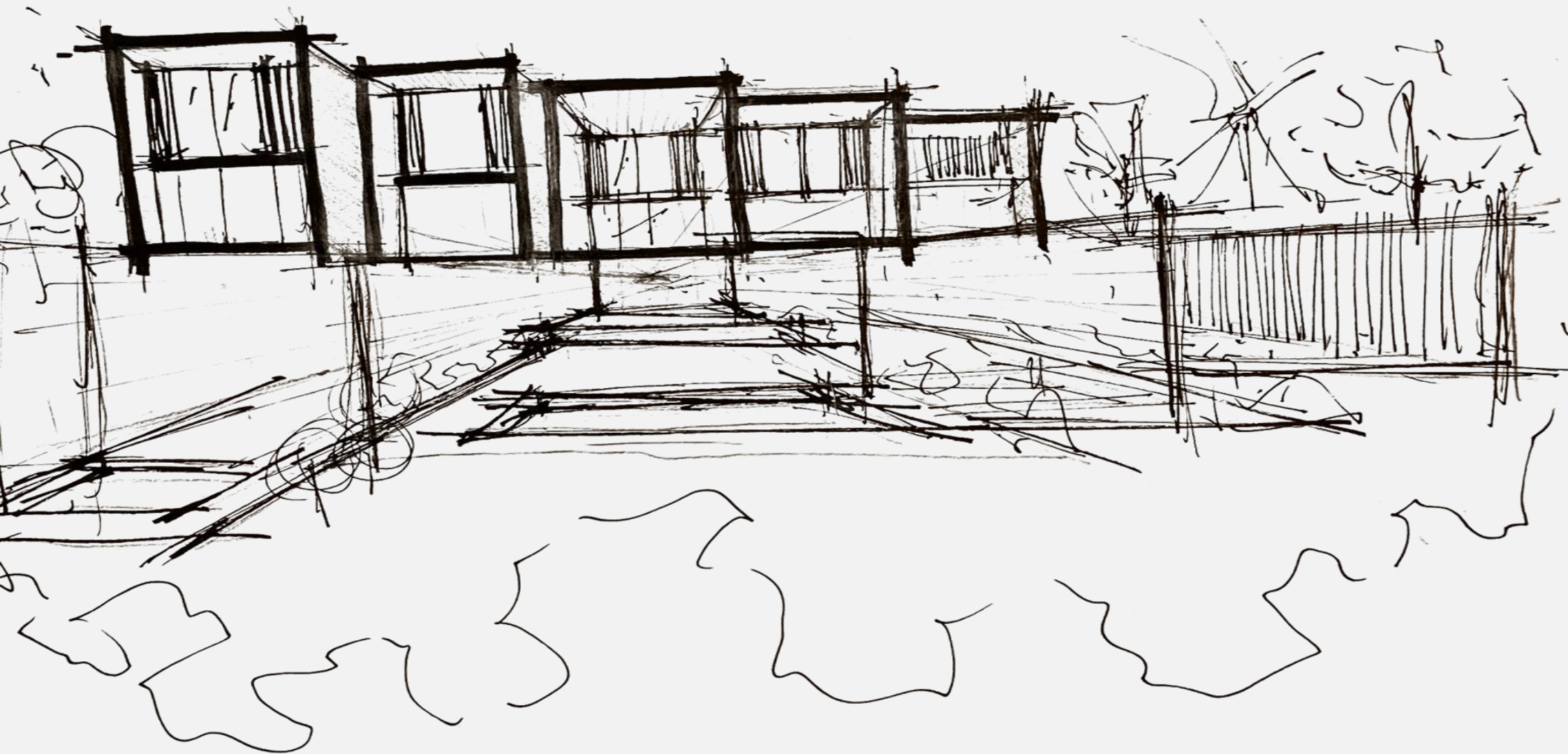
HIMALAYA

DESENVOLVIMENTO IMOBILIÁRIO

# MIRANTE GÁLIA

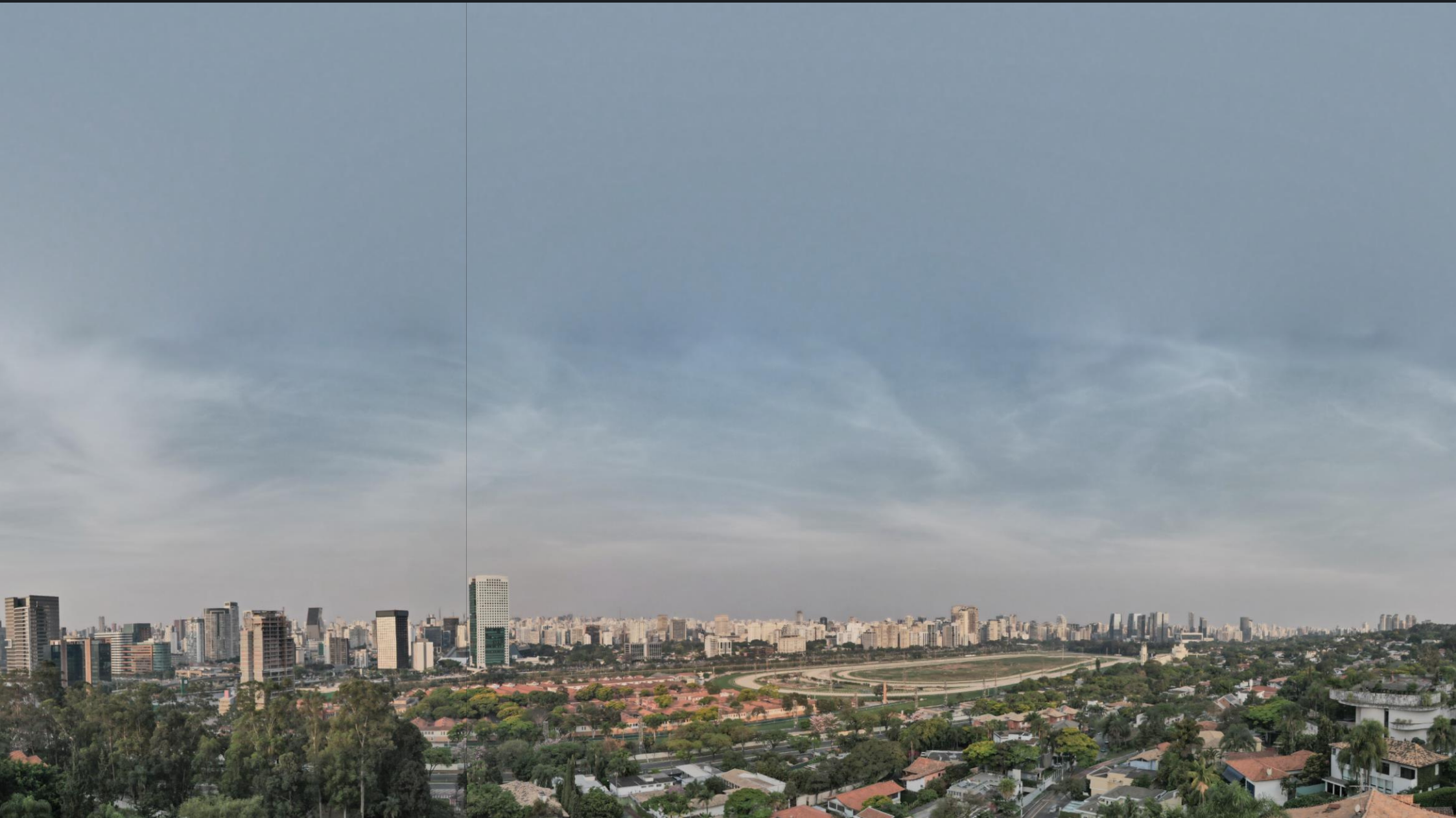


# MIRANTE GÁLIA



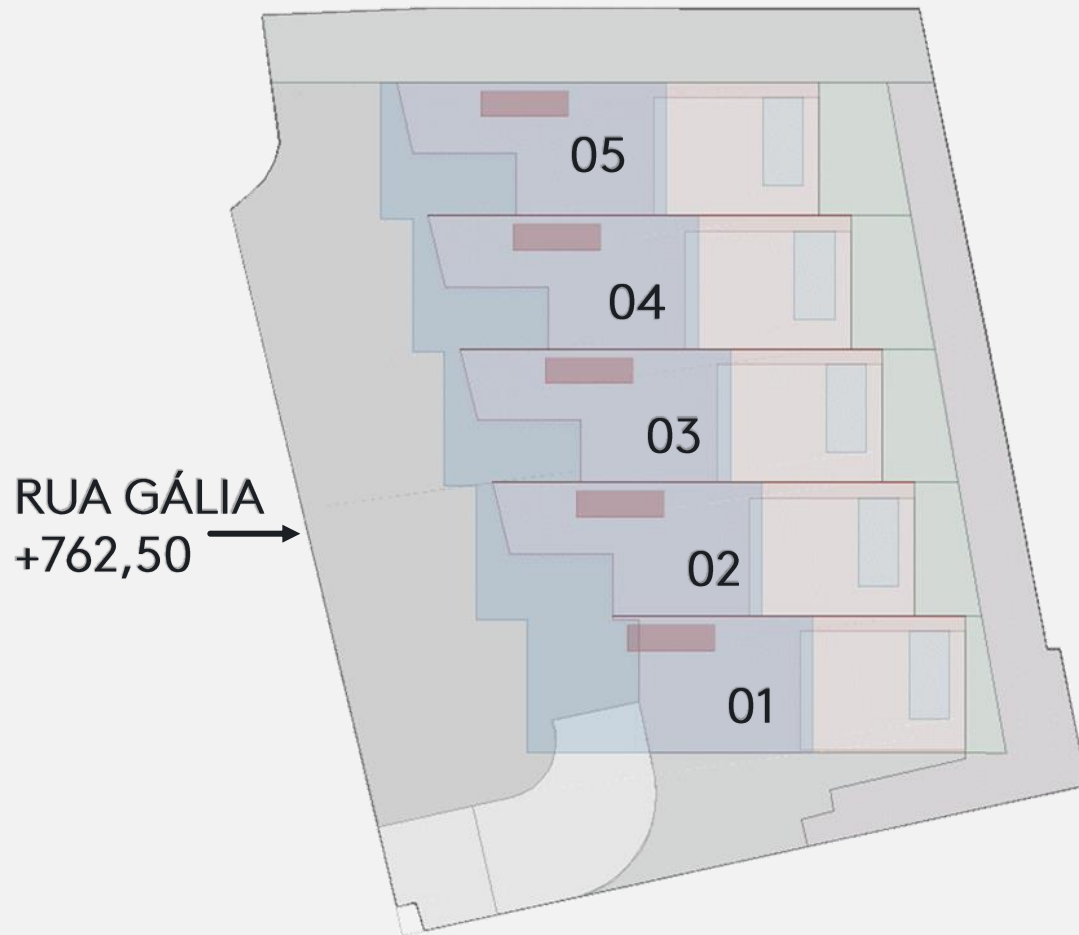


# MIRANTE GÁLIA



# TÉRREO

+764,60 N.MAR / +2,10 N.RUA  
SOMA DAS ÁREAS DAS CASAS

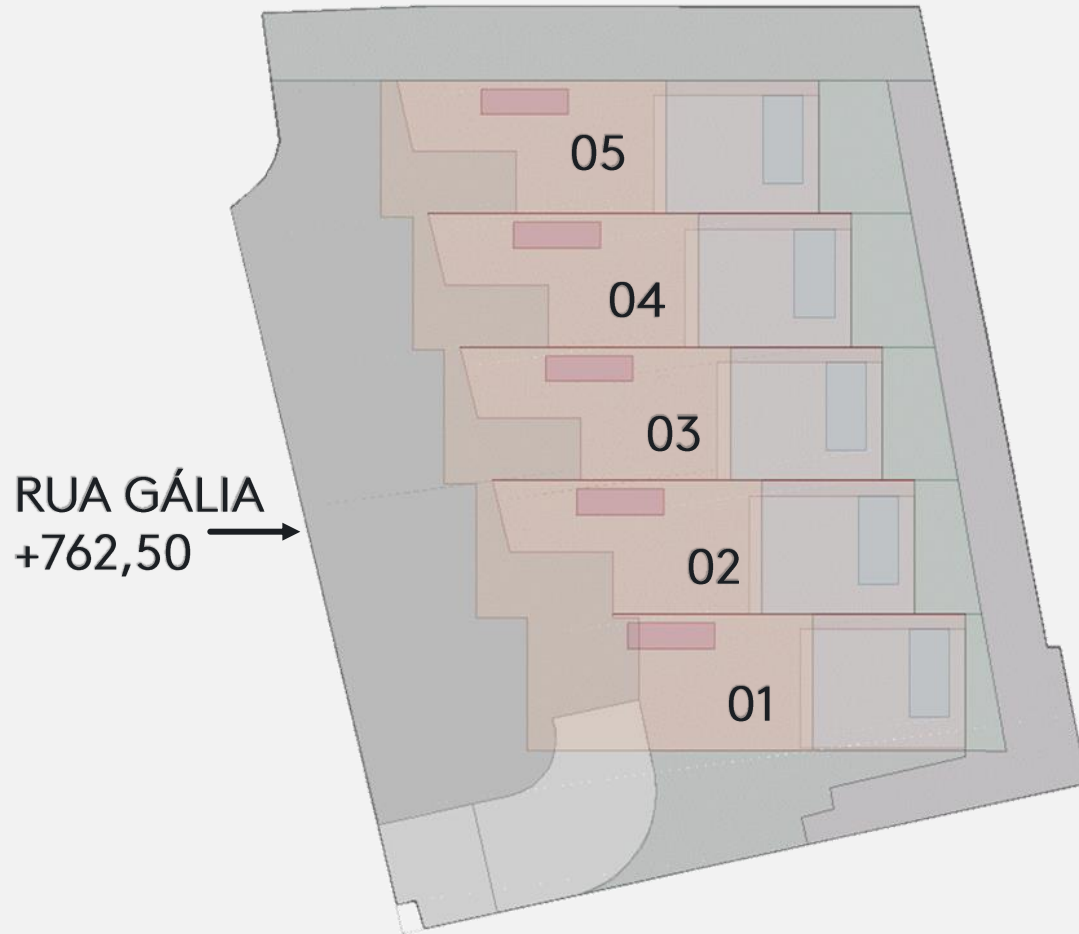


ÁREA   PRIVATIVA	745,00M <sup>2</sup>
CIRC. VERT.   PRIV.	



# SUPERIOR

**+768,10 N.MAR / +5,60 N.RUA**  
SOMA DAS ÁREAS DAS CASAS

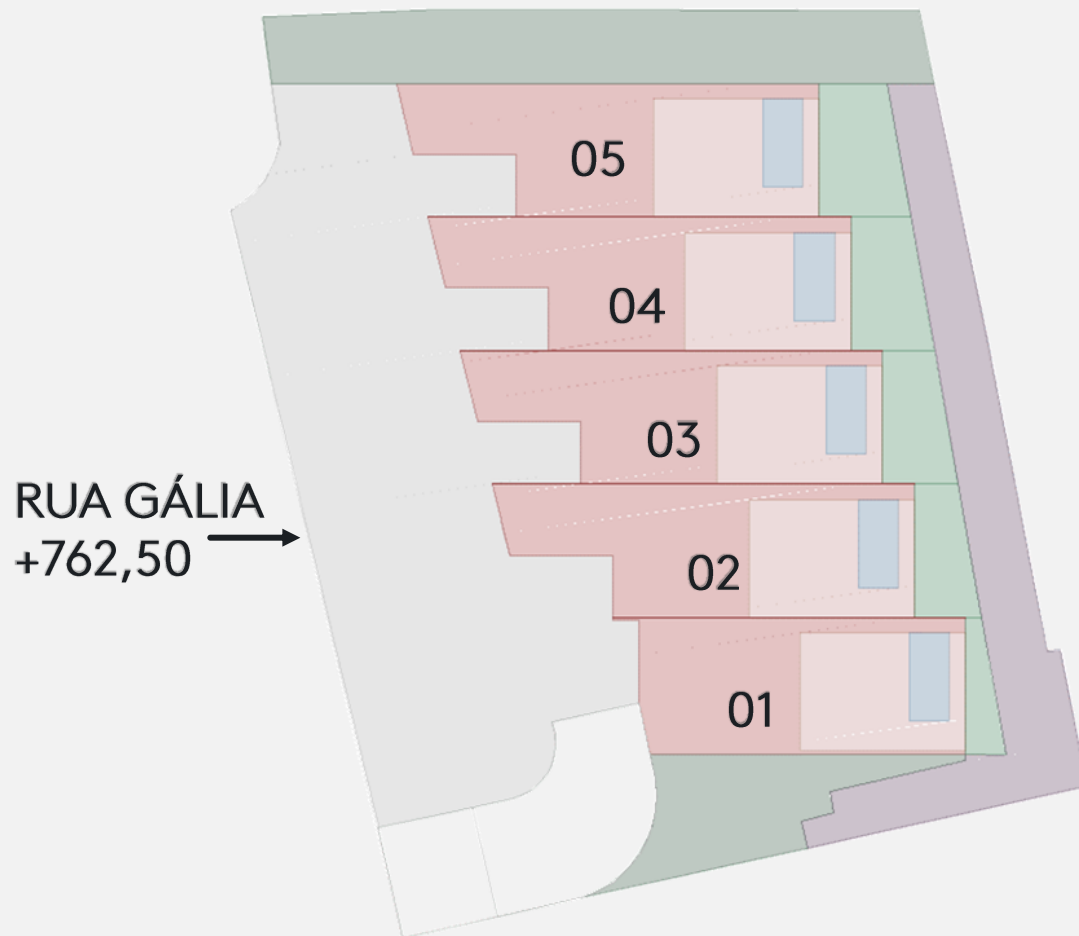


- ÁREA | PRIVATIVA 702,00M<sup>2</sup>
- CIRC. VERT. | PRIV.



# SUBSOLO

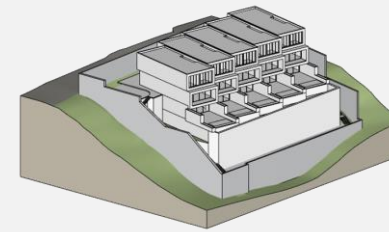
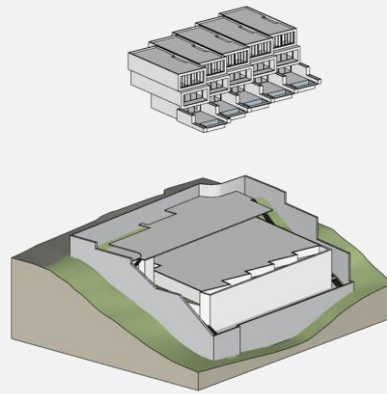
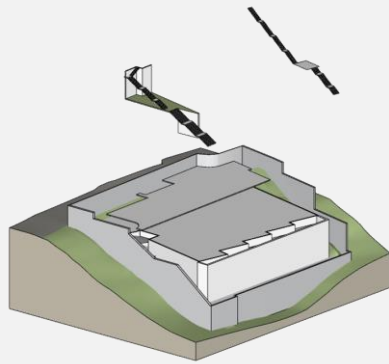
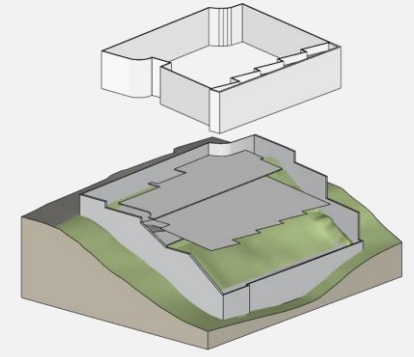
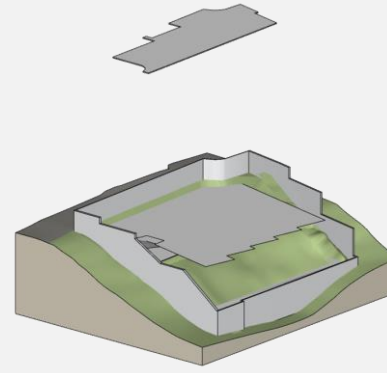
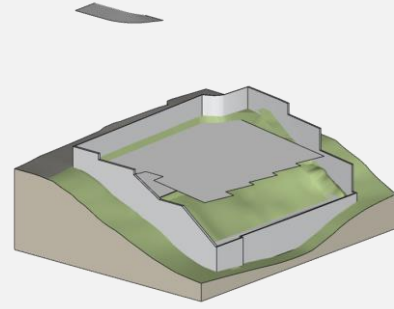
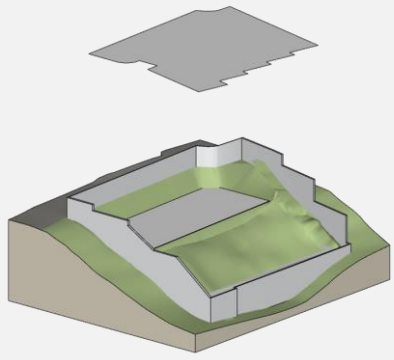
+761,10 N.MAR / -1,40 N.RUA  
SOMA DAS ÁREAS DAS CASAS



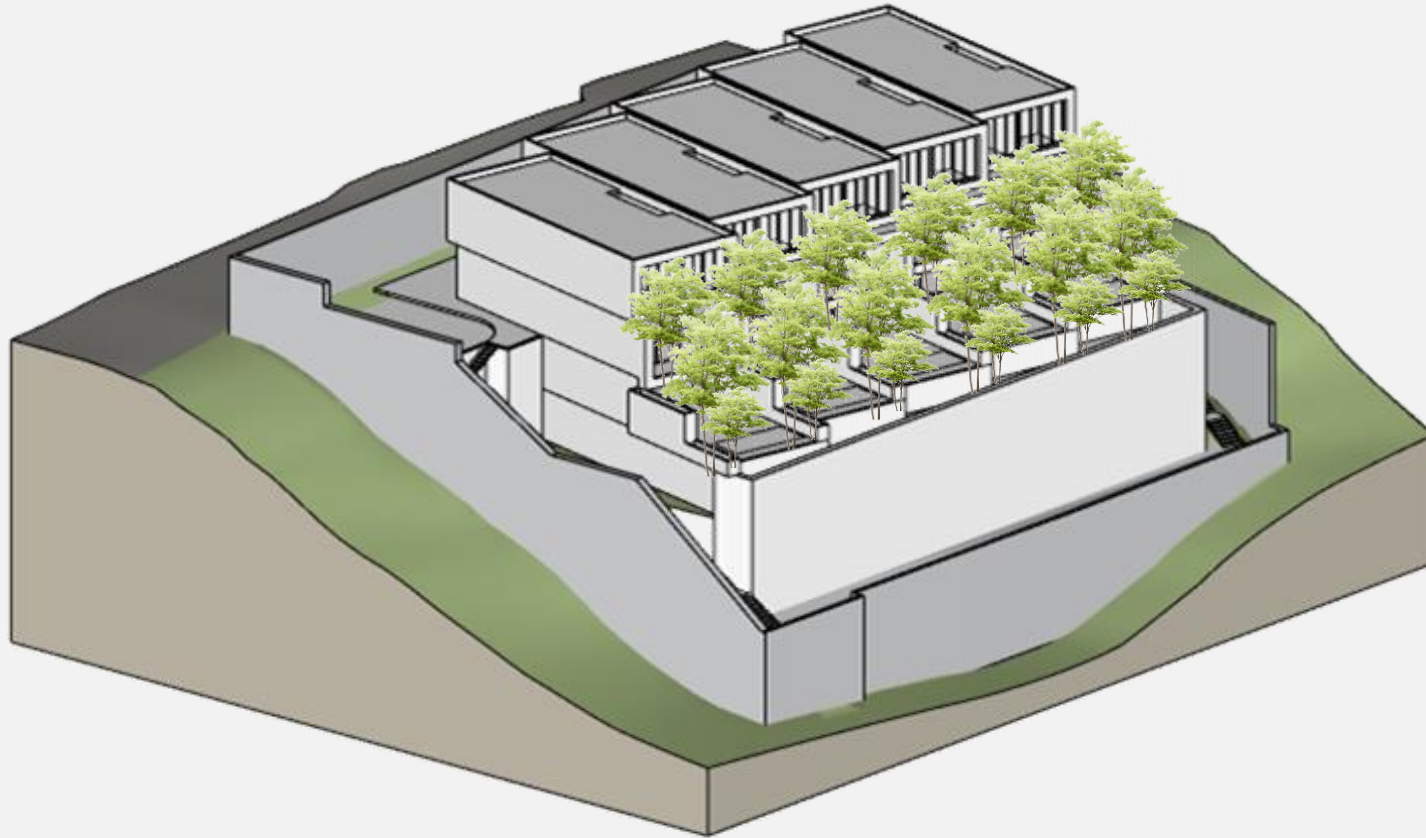
□	GAREGEM   COMUM	650,00M <sup>2</sup>
■	ÁREA   PRIVATIVA	543,00M <sup>2</sup>
■	DECK   PRIVATIVO	310,00M <sup>2</sup>
■	PISCINA   PRIVATIVA	70,00M <sup>2</sup>
■	MIRANTE   COMUM	200,00M <sup>2</sup>
■	JARDIM   PRIV.	155,00M <sup>2</sup>
■	JARDIM   COMUM	262,00M <sup>2</sup>



# DIAGRAMA | IMPLANTAÇÃO



# DIAGRAMA | IMPLANTAÇÃO



# QUADRO DE ÁREAS

	ÁREA M <sup>2</sup>	
TÉRREO	745,00	
SUPERIOR	702,00	
INFERIOR	543,00	
DECK	310,00	
PISCINA	70,00	
<b>ÁREA DO TERRENO</b> <b>AE = 2.158,00M<sup>2</sup> AR = 2.342,00M<sup>2</sup></b>		
	PERMITIDO	PROPOSTO
TERRENO - AE	2.158,00M <sup>2</sup>	
CA = 1	2.158,00M <sup>2</sup>	1990,00M <sup>2</sup> ✓
TO = 50%	1.079,00M <sup>2</sup>	745,00M <sup>2</sup> ✓
PERMEABILIDADE	647,40M <sup>2</sup> (30%)	262,00M <sup>2</sup> (12,10%) ✗



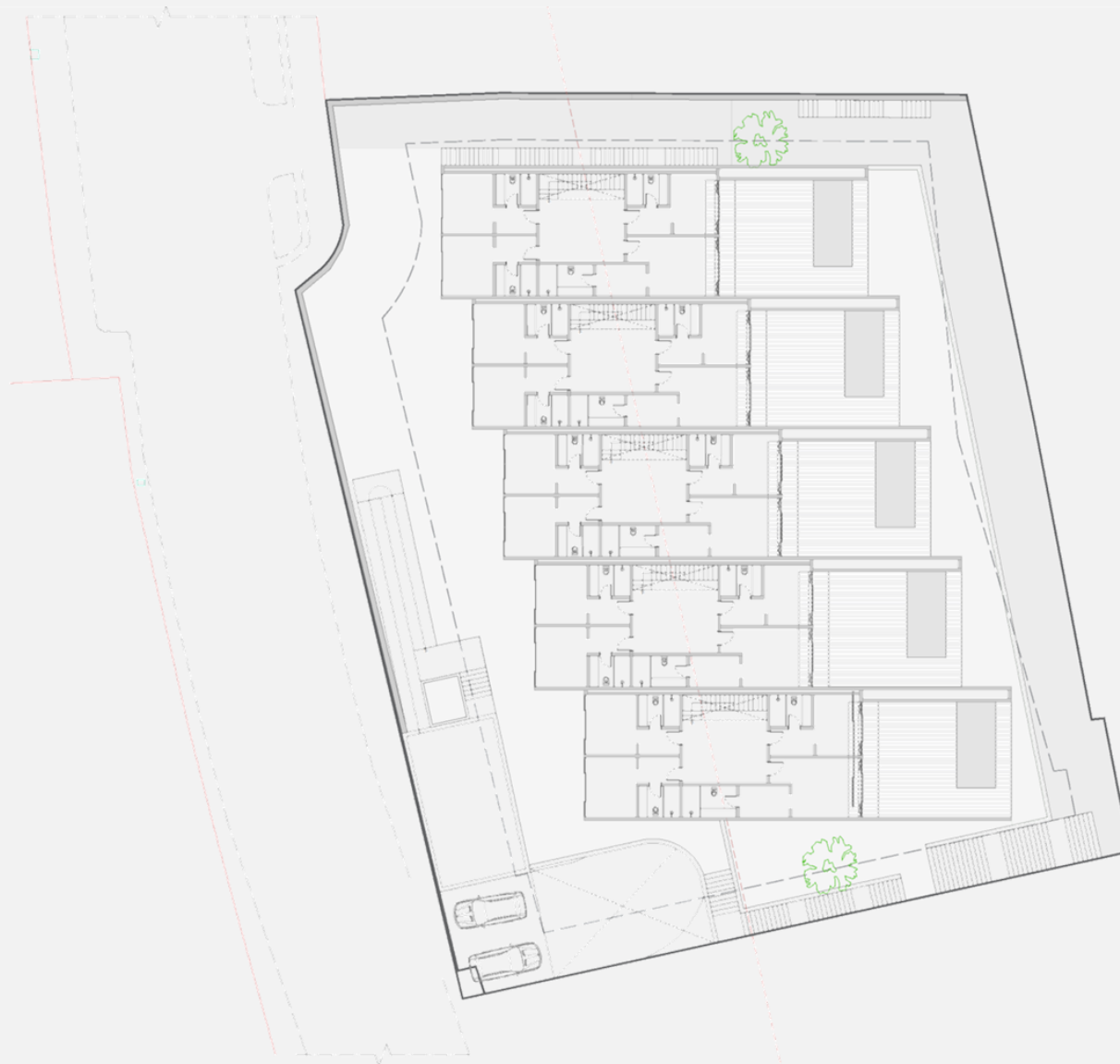
# TÉRREO | GERAL



PLANTA TERREO- 762,50



# SUPERIOR | GERAL



PLANTA SUPERIOR - 766,00



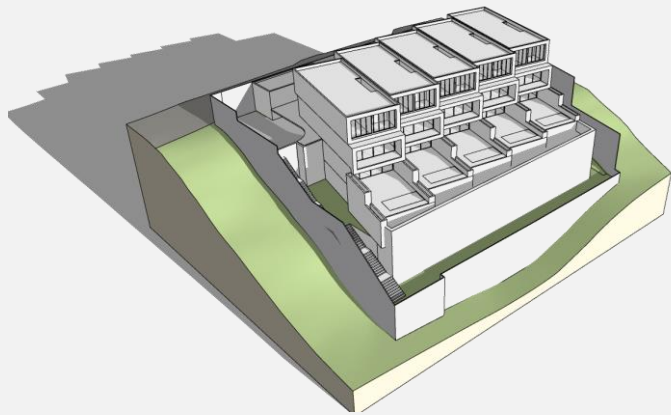
# SUBSOLO | GERAL



PLANTA SUBSOLO - 761,10



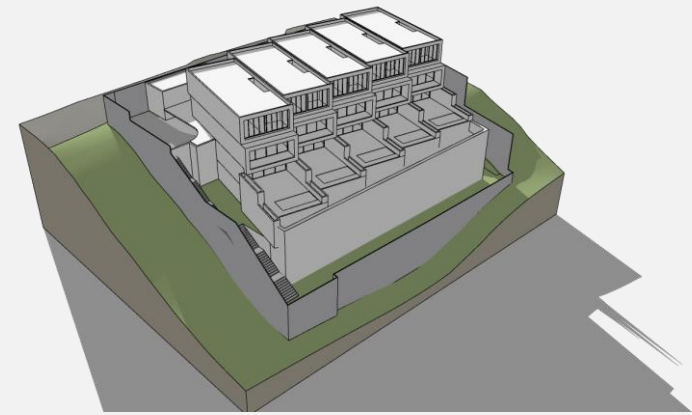
# DIAGRAMA | INSOLAÇÃO - 21/03



7H30



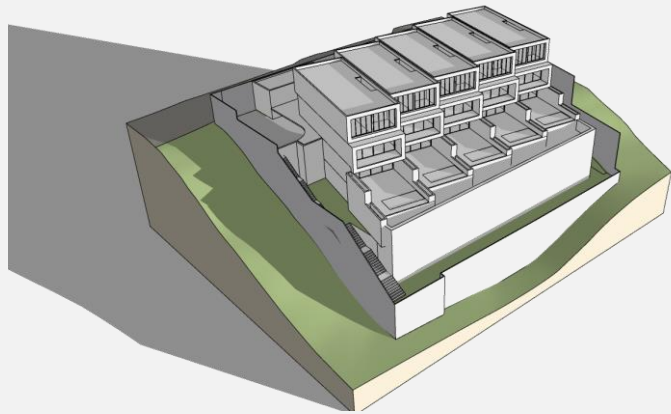
13H30



16H30



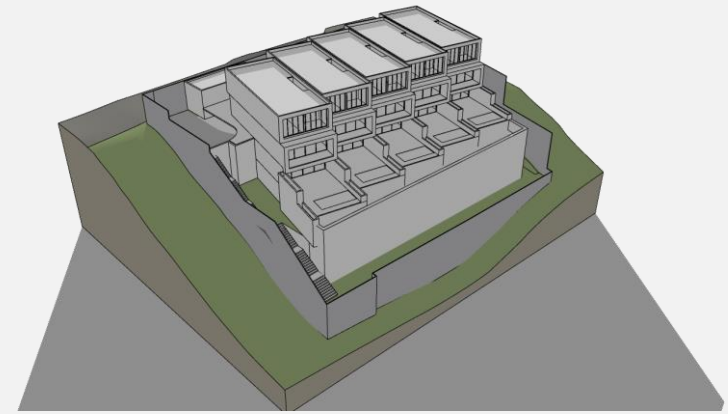
# DIAGRAMA | INSOLAÇÃO - 21/06



7H30



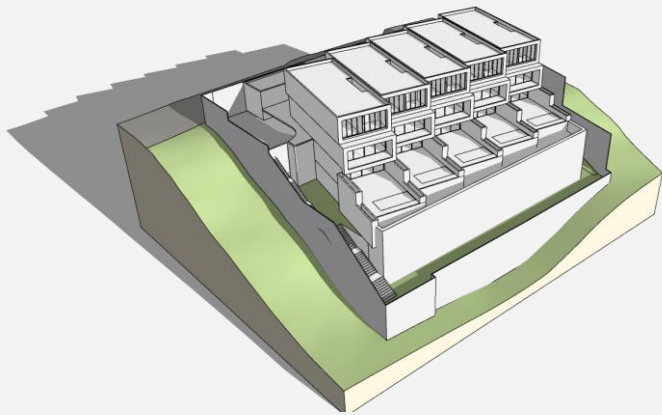
13H30



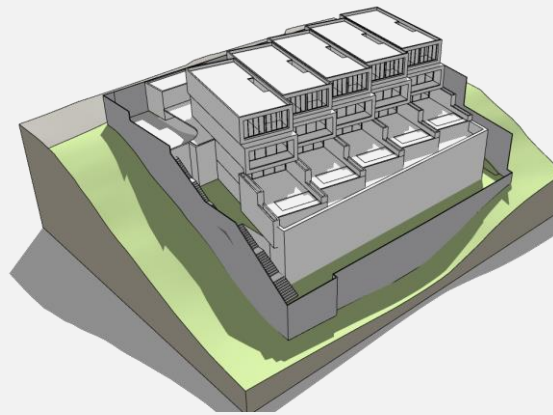
16H30



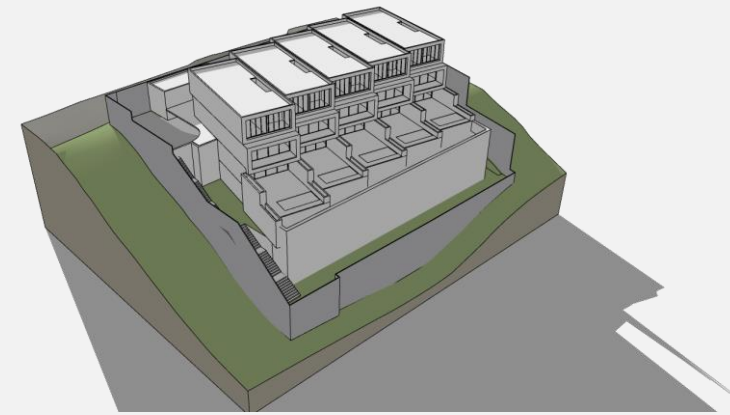
# DIAGRAMA | INSOLAÇÃO - 21/09



7H30



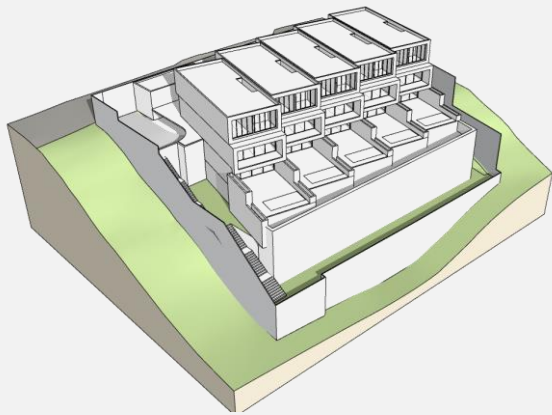
13H30



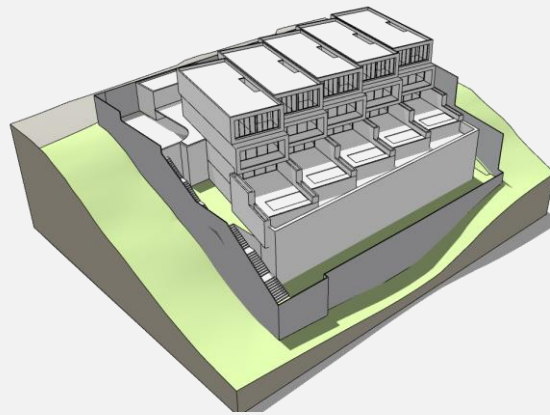
16H30



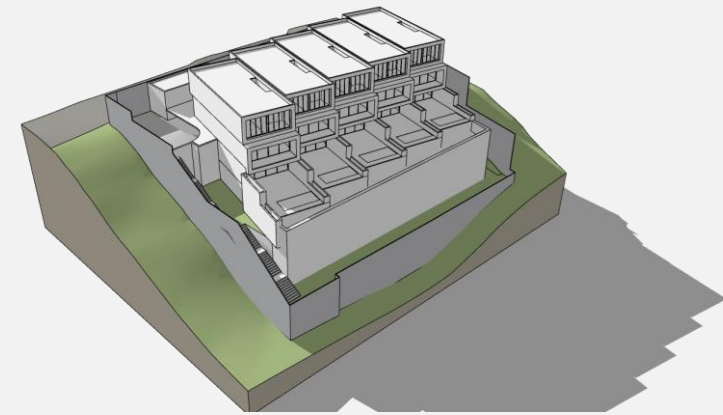
# DIAGRAMA | INSOLAÇÃO - 21/12



7H30



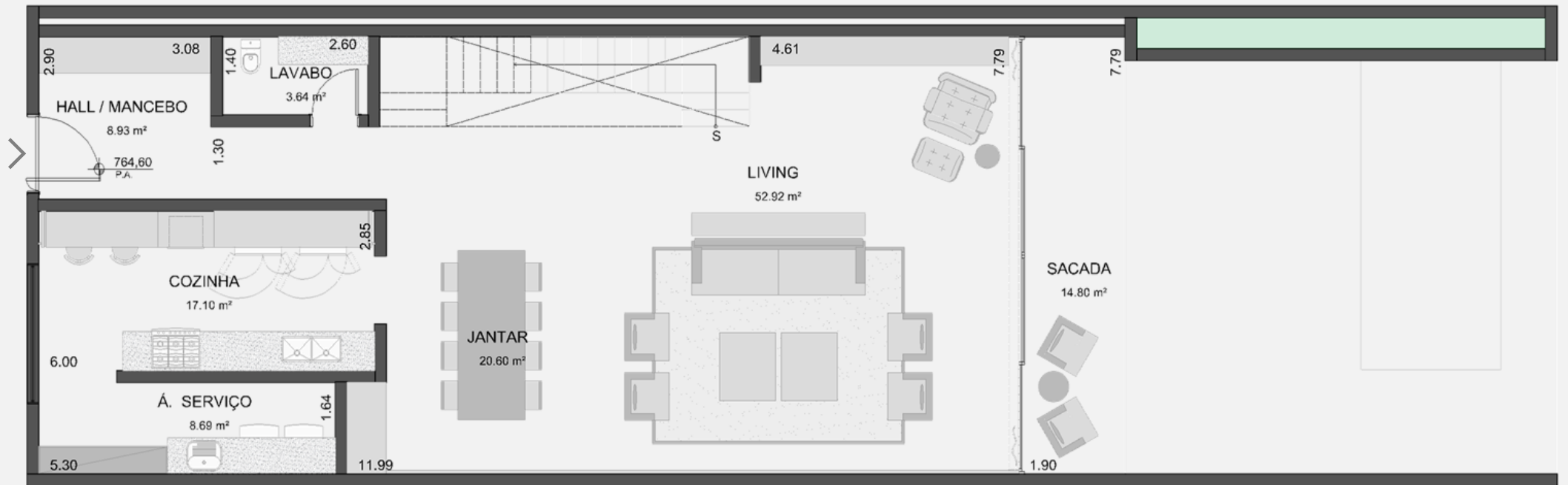
13H30



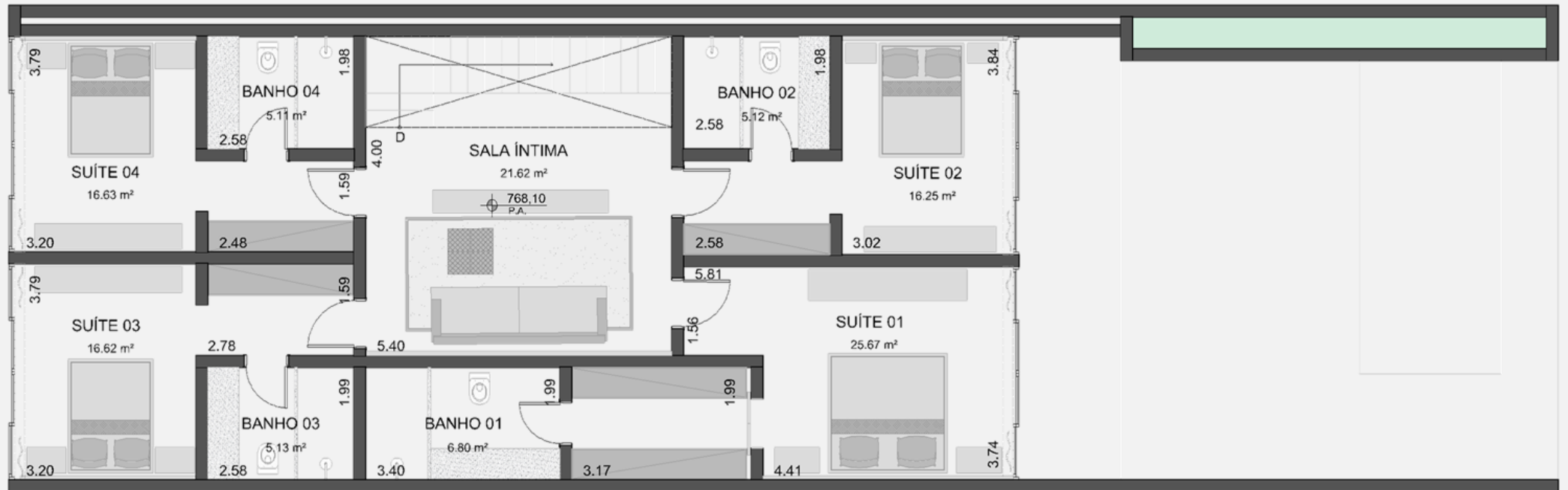
16H30



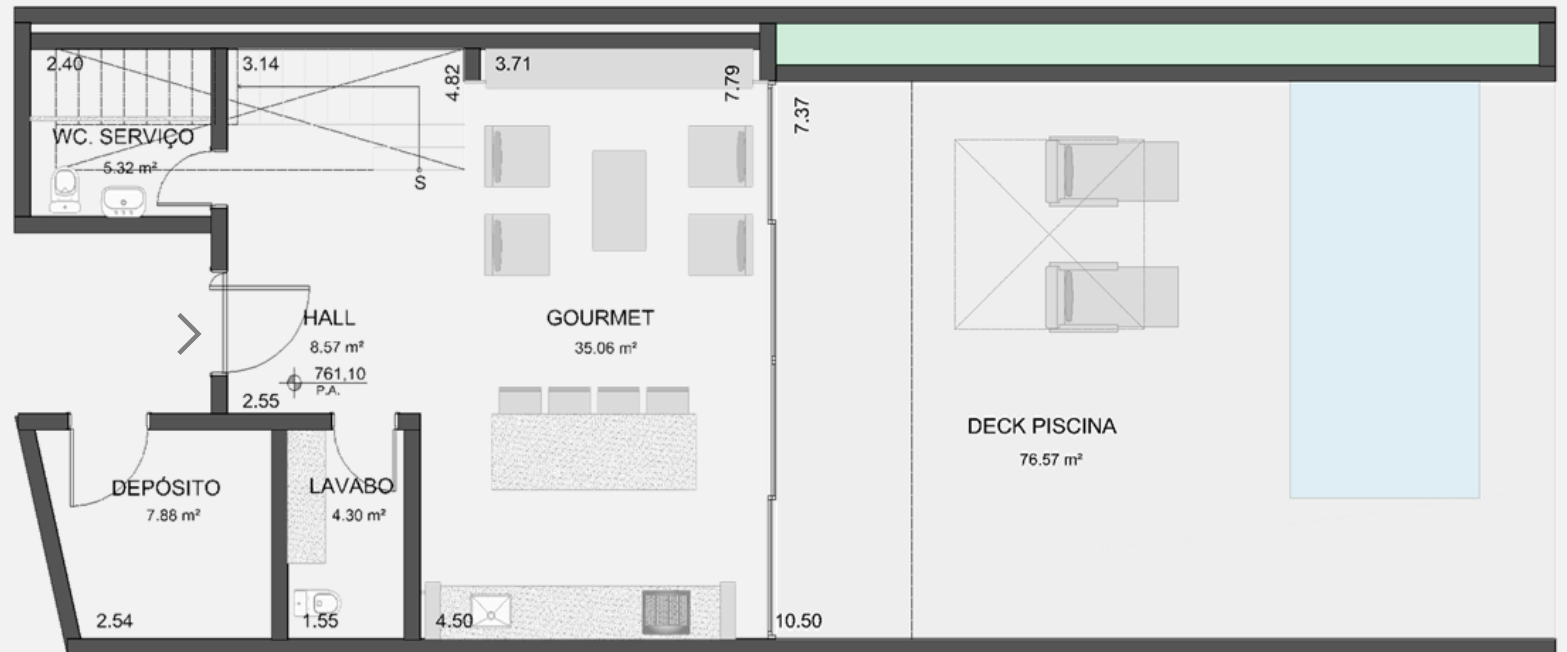
# CASA | TÉRREO



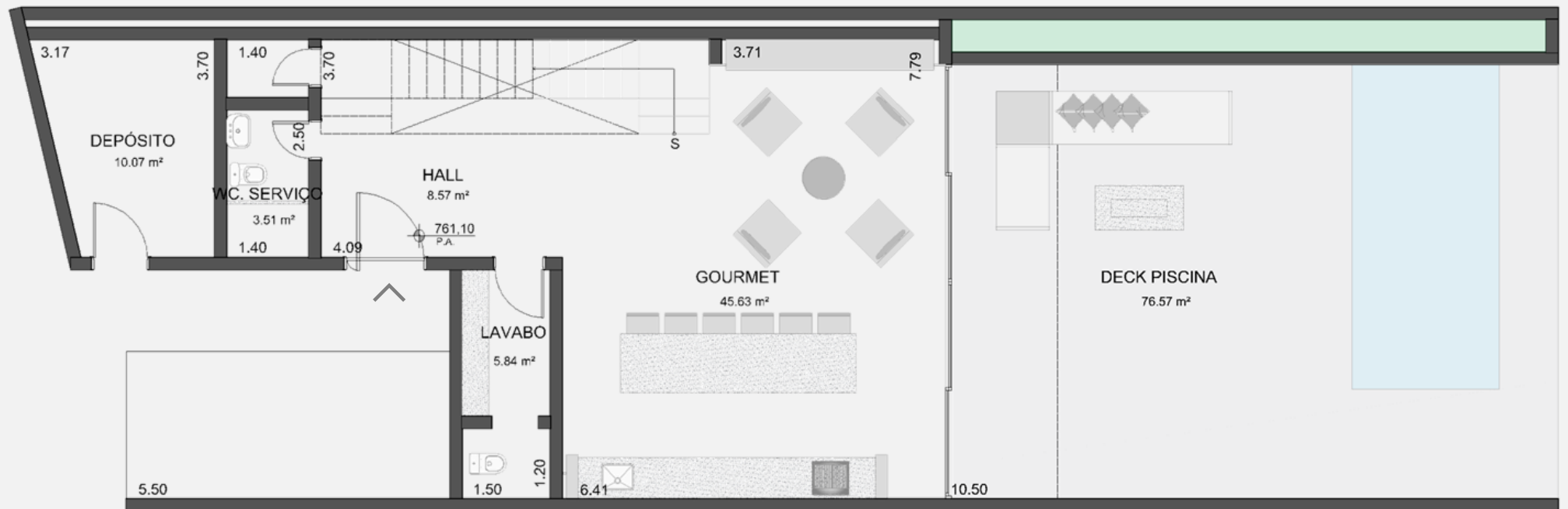
# CASA | SUPERIOR



# CASA | SUBSOLO 01



# CASA | SUBSOLO 02/03/04/05



# TABELA DE ÁREAS PRIVATIVAS

TÉRREO.....143,90M<sup>2</sup>

SOCIAL.....123,70M<sup>2</sup>  
SERVIÇO.....27,80M<sup>2</sup>

SUPERIOR.....129,90M<sup>2</sup>

ÍNITIMO.....101,80M<sup>2</sup>  
SOCIAL.....21,60M<sup>2</sup>

SUBSOLO  
02/03/04/05.....168,45M<sup>2</sup>

SOCIAL.....158,65M<sup>2</sup>  
SERVIÇO.....18,35M<sup>2</sup>

SUBSOLO 01.....162,75M<sup>2</sup>

SOCIAL.....136,79M<sup>2</sup>  
SERVIÇO.....18,10M<sup>2</sup>

ÁREA PRIVATIVA DE CADA UNIDADE

CASA 01.....436,55M<sup>2</sup>  
CASA 02/03/04/05.....442,25M<sup>2</sup>

4 SUÍTES

3 VAGAS

DECK E PISCINA PRIVATIVA  
INTEGRADO AO GOURMET

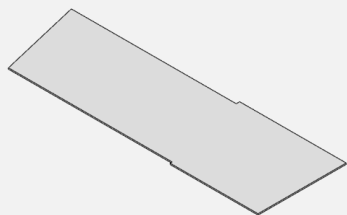
JARDIM PRIVATIVO

ÁREA PARA FUNCIONÁRIOS

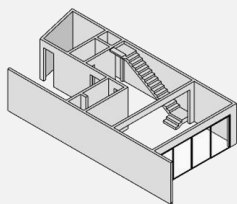
ACESSO INDEPENDENTE PARA A CASA



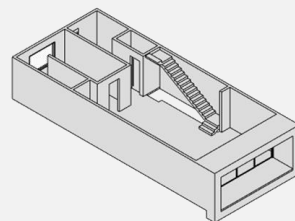
# CASA | DIAGRAMA



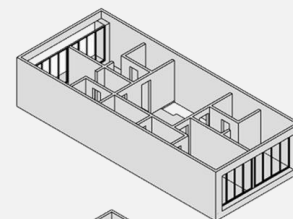
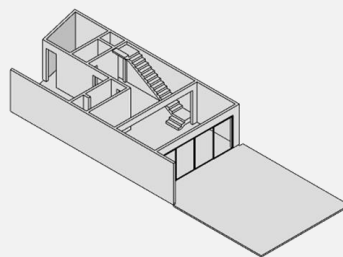
PISO DO SUBSOLO  
+761,10



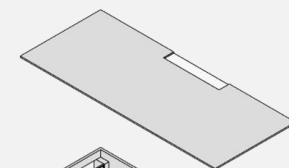
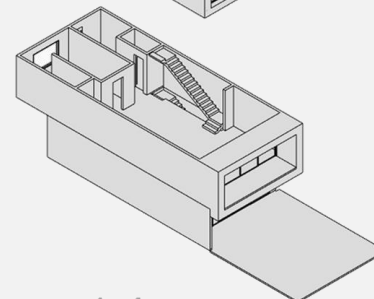
SUBSOLO | GOURMET +DECK  
+761,10



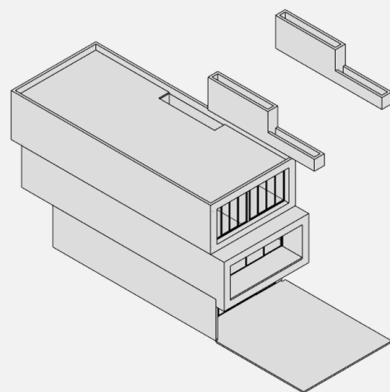
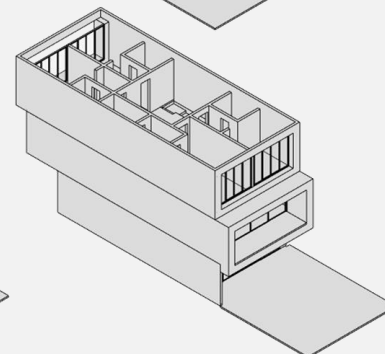
TÉRREO | SOCIAL + A.S.E.  
+764,60



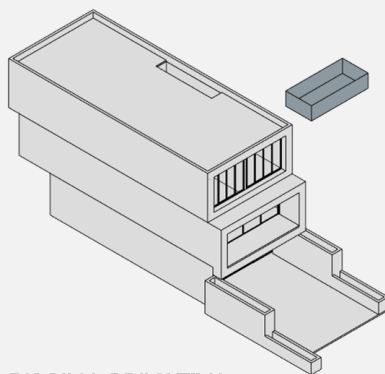
SUPERIOR | ÍNTIMO  
+768,10



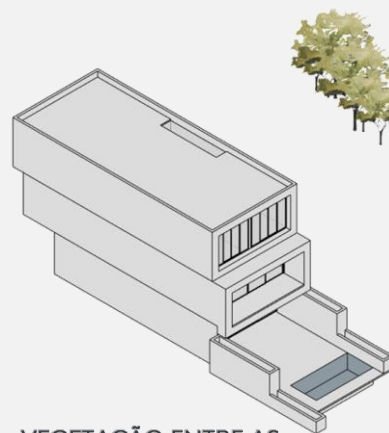
COBERTURA PLANA  
+771,60



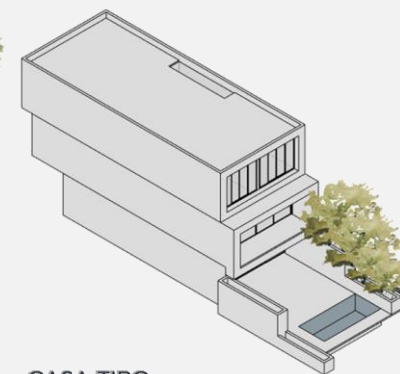
FLOREIRAS | DIVISÃO E  
BARREIRA VISUAL ENTRE AS  
CASAS



PISCINA PRIVATIVA  
+761,10



VEGETAÇÃO ENTRE AS  
CASAS



CASA TIPO



# CASA | DIAGRAMA

